

**L. The Auto Geolink Tool** (Pg. 166) allows you to upload the digital photos that were taken during your inspection, while your GPS was running. This tool will link the digital photos to the Lat./Lons. locations saved in your GPS tract file. You can match the time stamp of the photo to the time stamp of the GPS, therefore linking them together and placing an icon on the map. So, while looking at your map, when you click on the at one of the locations, the photo you took there pops open.

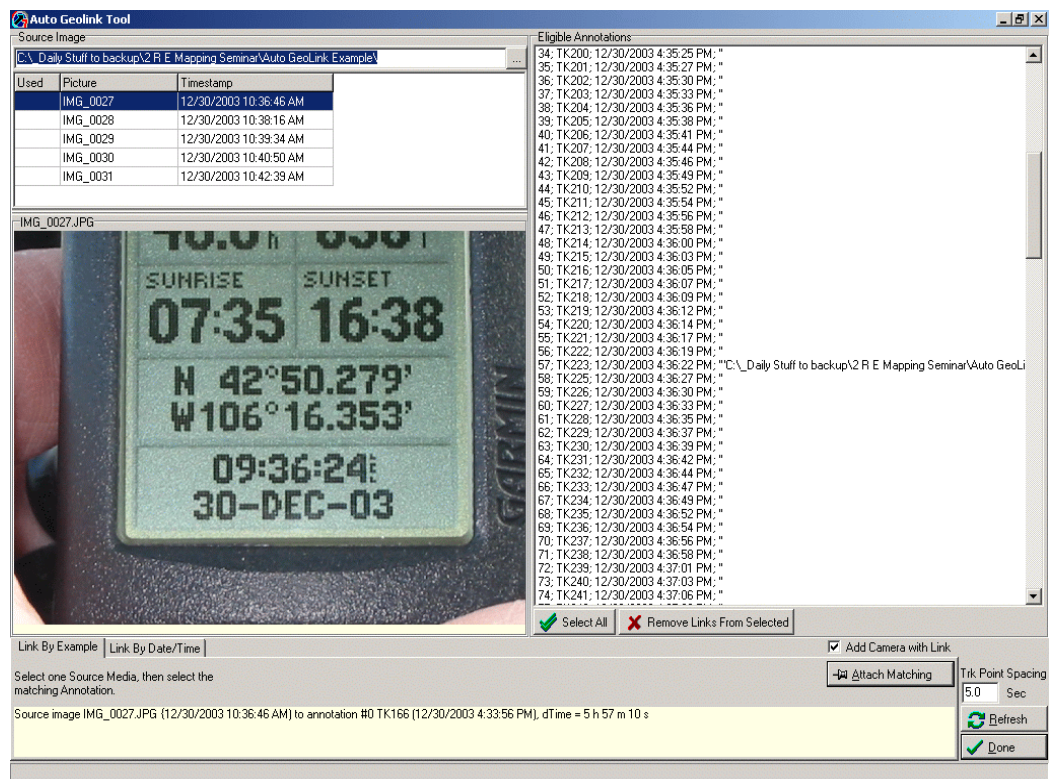
The graphic below shows that I had placed 5 digital photos and along with the GPS tract file, in the same folder named .....\\Auto GeoLink Example.

What you see is that the first photo of this series taken (IMG\_0027) was of the GPS itself. WHY? To capture the GPS time of the photo. But, I'm sure you know that your digital camera has a "time stamp", but who knows if it is correct. The program doesn't care what the exact "time stamp" of the camera says, only that it is working, because it will do a time differential between to two clocks ( in the GPS and in the Camera) and match them up. We just need to know WHEN the photo was taken.

Another discrepancy also shows here. That is the face of the GPS show 09:36:24, while the list of times in the GPS tract log (shown on the right side) are showing 4:36:22 PM. What is the matter here?

The reason is the tract log ( 4:36:22 PM ) is reading in ( English) Greenwich Mean Time, from the satellite. The GPS face has converted the GMT to local time ( 09:36:24) via some offsets in the configuration setup. The 10:36:46 AM from the camera is a tattle-tale that I forgot to reset the camera clock from day light saving time.

It is not a problem, because I had looked and knew that the IMG\_027 was the photo that I wanted because it was the photo of the GPS face showing 09:36:24. So, I selected that photo and looked at the GPS time and matched up the nearest minute and seconds, really ignoring the hour. As you can see, I choose the 4:36:22 PM as being the nearest in time, then clicked "attach matching" and the program did all of the time differential calculations and attached the photos to "best fit" of the time stamps.



1 Listed below are the steps of editing I did to this file to  
2 get it to look like this P#3 icon.

- 3 - Selected RED for the GPS line color.
- 4 - Selected the GPS line width to be " 1 " width.
- 5 - Selected the Camera\_270 icon as the symbol.  
6 (270 is the Azimuth direction for West)
- 7 (Sized the camera icon)
- 8 - Selected the Font size and color for the "P#3".

9 Now when I click on the Camera Icon and "open the  
10 link", the photo taken at that location pops open.

