

All Topo Maps - General Software Training

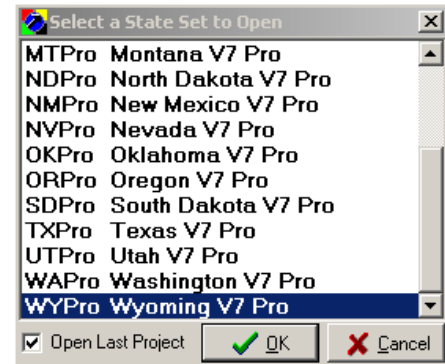
(The page references in this training manual, refer to the programmer's R7.2 Pro User's Guide.)

Let's start the program and check the set-up.

Start the program with this icon (Pg. 87)

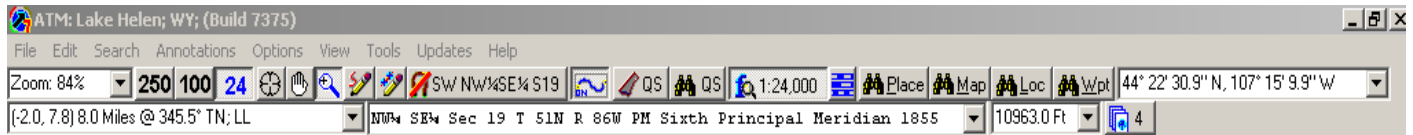


Select the correct State Set (Pg. 87)



The main Viewer menu (Pg. 39)

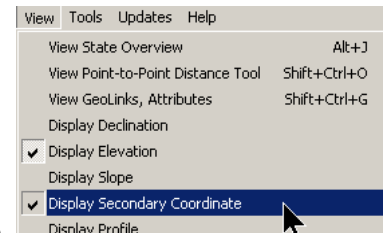
A



B

There are lots of things to talk about on this graphic, but let's look at the window tiles below "A", and above "B". Depending on your screen resolution, this "A" window tile may NOT be to the right of the BinoWPT, but instead as the first entry on the next line. Which ever it is located, it is the Primary Coordinate Display. (Pg. 152) (If you move your cursor over this window tile for a moment, a message that reads: Primary Coordinate Display, will appear, then disappear). We recommend that you display some coordinate value in this window. Whether it be a Lat./Lon, UTM or State Plane, we don't care, just NOT a PLS value.

We further recommend that you have your PLS information as the display in the "B" window tile, which is the Secondary Coordinate Display. So, if you have loaded your PLS Add-on Tool and don't see this Display. Click on View and Click on Display Secondary Coordinate. (Pg. 152)



The reason, that we recommend these different values in these windows, has to do with the capturing of the contents of these windows with "Ctrl X" and "Ctrl Z" keystrokes. Later, when we create "Big Topo" Maps (or instruct the program to seam together parts of adjacent maps to make new larger, custom maps), we use the "Ctrl X" keystroke to capture to contents of the Primary Coordinate Display in that "Big Topo" process that we will perform later.

The "Ctrl Z" captures (copy to clipboard) the content of the Secondary Coordinate window, use a "Ctrl V" to paste. NW¼ SE¼ Sec 19 T 51N R 86W PM Sixth Principal Meridian 1855.

1 2 3 4 5 6

You can see if you wanted to write down this PLS location there are 6 things to get wrong. Or if your PLS is set for ¼ ¼ ¼, there are 7 - SW¼ SE¼ NW¼ Sec 19 T 51N R 86W PM Sixth PM.

1 2 3 4 5 6 7