

Using GEWorldFile

Introduction

GEWorldFile will help you quickly generate a [world file](#) for use with a map or [orthophoto](#) image that does not have an existing world file. This can be useful when you clip an image from an online resource like Google Earth or Microsoft's Virtual Earth.

GEWorldFile does not specify an insertion point, only a scale factor. This is all that is needed for programs like [Net Deed Plotter](#) that are spatially un-aware.

Support

GEWorldFile is supplied at no charge. No support, other than this help file is provided.

You can report issues by email to marcosplata@gmail.com.

Installing

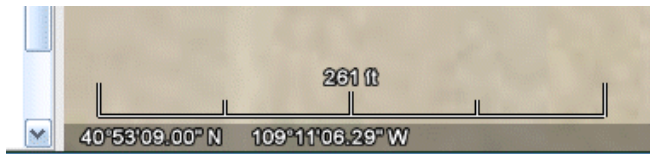
GEWorldFile is installed using a single file automatic installation tool. The tool will suggest an installation path and will automatically place a runtime icon in the "Net Deed Plotter" start menu and on your desktop.

The default location is `..\Program Files\GEWorldFile*`, you must have read/write permission for this location to install AND run GEWorldFile. If you do not have administrative rights to the 'Program Files' folder, it is suggested that you change the default installation path to a location where you have full rights (perhaps 'My Documents\GEWorldFile').

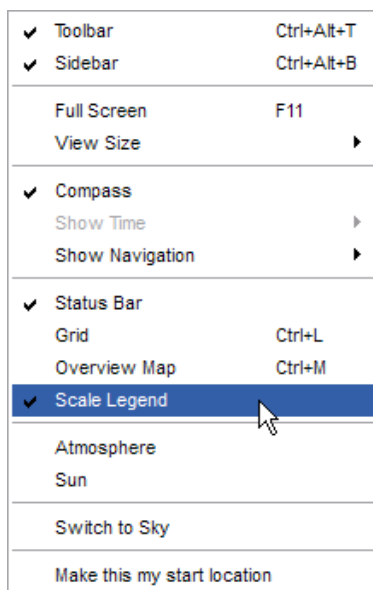
Running GEWorldFile

To scale a file, first display the map image in Google Earth (or another similar resource).

Make sure the scale bar is displayed on the southwest corner of the map image in Google Earth!:



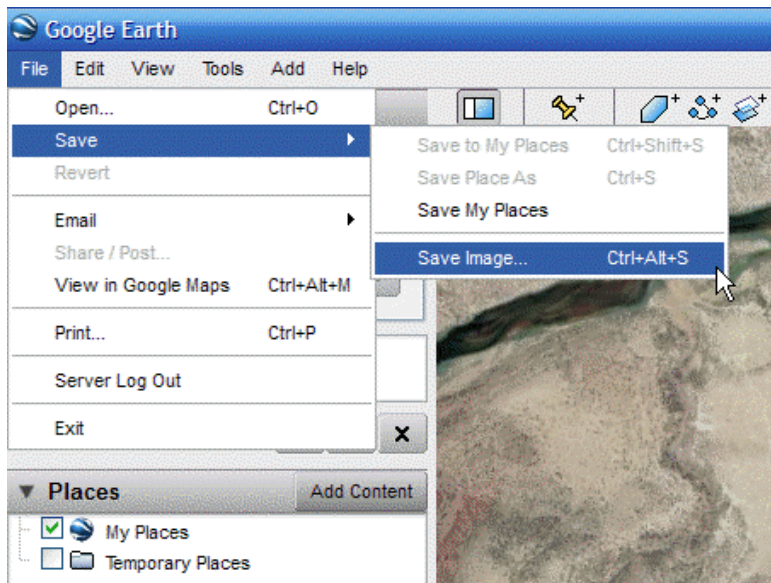
If the scale bar is NOT shown: from the main menu in Google Earth select "View: Scale Legend". There must be a check mark next to "Scale Legend":



It is best to rotate the map so North is up. You can quickly do this by clicking on the "N" in the Google rotation tool:



Once the correct map is shown on the screen, save the image to a graphic format image file. In Google Earth this can be done from the "File: Save: Save Image..." main menu item. Be sure to remember the folder where you save the image to (so you can find it again):

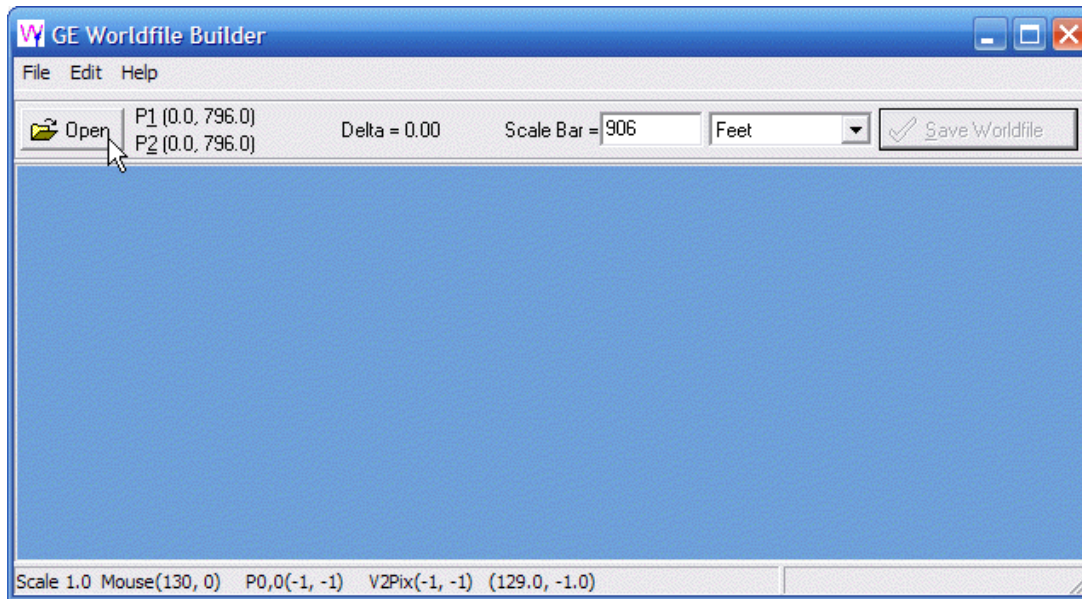


Once an image has been saved, start GEWorldFile by double-clicking on the desktop icon

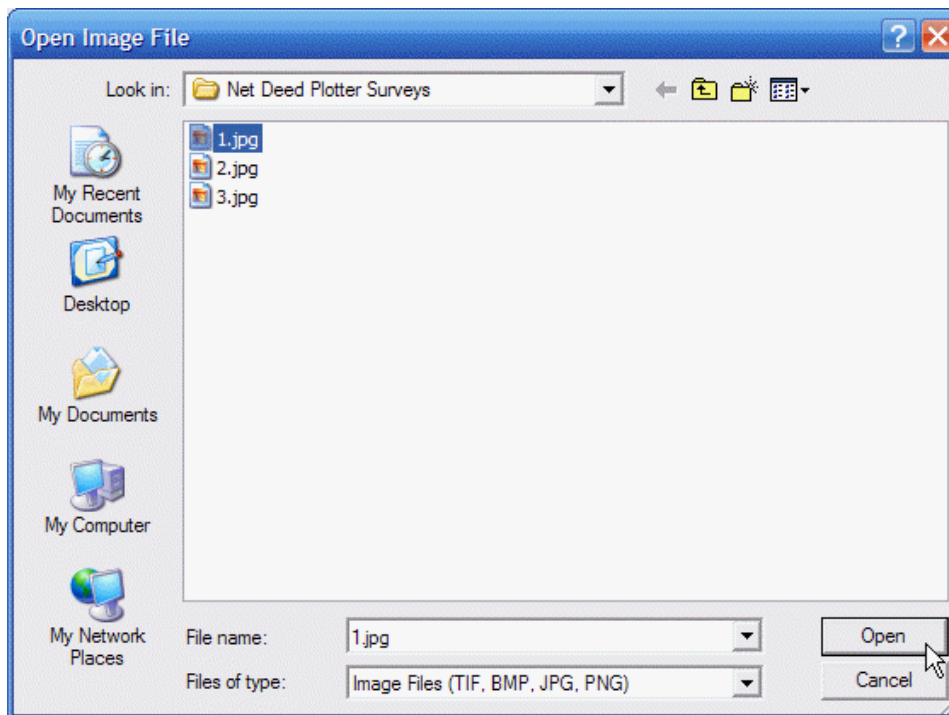


or use the Windows Start Menu item "Start: All Programs: Net Deed Plotter: GEWorldFile".

The GEWorldFile tool will launch and look like this:



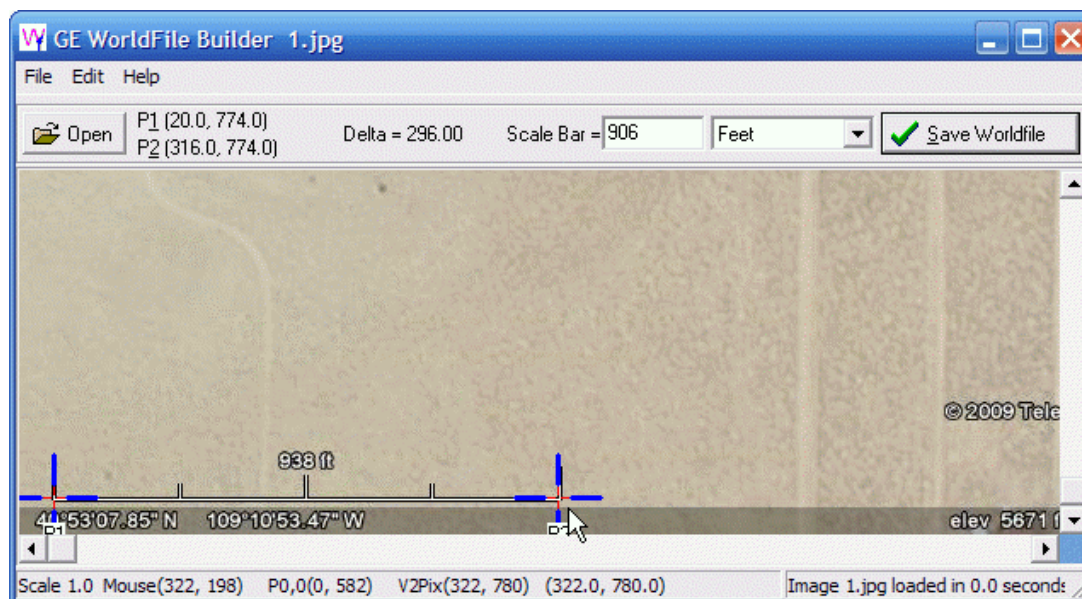
Press the Open button and browse for the image file that you saved from Google Earth:



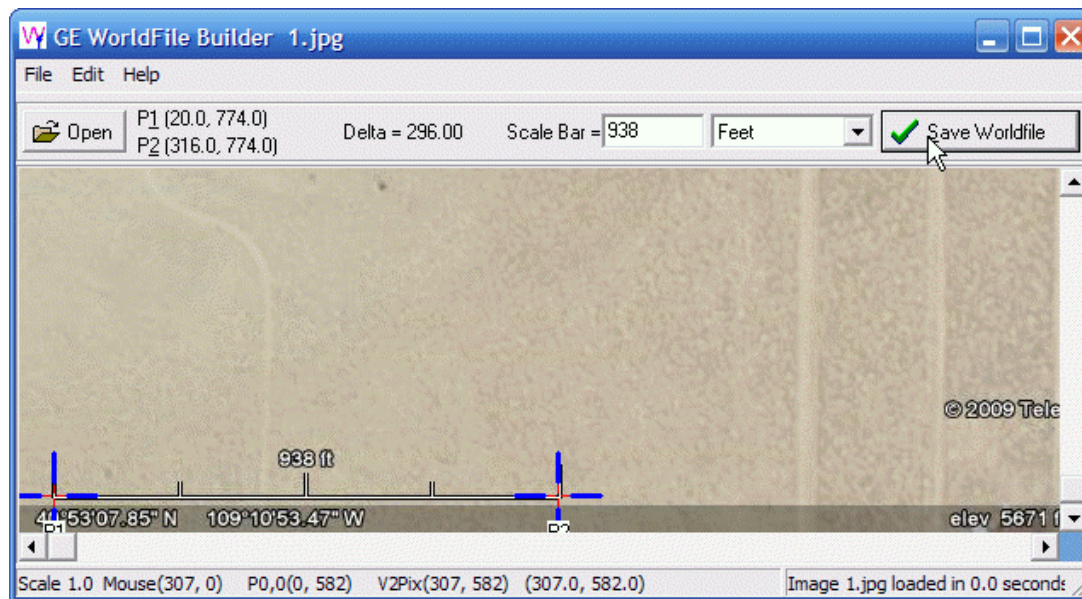
GEWorldFile will show the lower left corner of the map image, you should be able to see the scale bar:



Place the mouse cursor on the left hand side of the scale bar and press the "1" key on your keyboard, then place the mouse cursor on the right hand side of the scale bar and press the "2" key on the keyboard. Cross-hairs will be displayed over the scale bar ends:



If you don't like the alignment of the cross-hairs you can reposition the mouse cursor and press the "1" or "2" again to move them. Once the cursors are in the correct location, enter the displayed scale length and units in the "Scale Bar" entry:



Finally press the "Save Worldfile" button.

Your image can now be directly loaded into Net Deed Plotter.

GEWorldFile Notes

Shortcut keys:

Shift	changes cursor to drag-hand tool to quickly move map on screen
Ctrl	changes cursor to zoom tool, left-click zooms in, right-click zooms out
Ctrl-Shift	changes cursor to zoom rectangle
Z	zooms to 100% and shows the southwest corner of the map
Ctrl-O	Opens an image file
Ctrl-S	Saves a world file for the current image
Mouse Roller Wheel	Turning away from you should zoom in, turning towards you should zoom out.

GEWorldFile remembers the offset of P1 and P2 (the ends of the scale bar) and automatically repositions them when you open a new image. Since the scale bar is always in the same location in an image, you typically only need to enter the scale bar distance for a new image.